

Seeger & Rusch Red Angus

Private Treaty Bulls - 2025



New Salem, ND

Brandon 701-226-5479

www.seeger-ruschredangus.com

Follow on Facebook - @Seeger & Rusch Red Angus



Thanks for looking at our 2024 born bulls!

We would like to thank you for taking the time to learn about our operation and look at the cattle we have to offer at Seeger & Rusch Red Angus. We have been at this for over 30 years, but it is a little different every year. New sires, a few new dams, many old dams producing good ones year after year, and new yearlings to offer to you all!

Brandon and I (Dixie) live on the Seeger homestead with our kids: Regan (8), Jolyn (6), and Kenna (3). The kids have displayed their love for cattle from a young age and love feeding cows with dad in the tractor, feeding cows cake during the summer, and getting to trail cattle. They also just discovered a new love for their show cattle this summer and have already put halters on their heifers for next summer. Although Sherill has retired, he still helps out, especially during calving season, when not traveling or hunting!

Our calving season starts around February 1st, and we try to finish up in early April. This gives us a little time to get calves worked so we can get ready to start breeding again at the beginning of May. We strive to keep a docile, family-friendly herd since we have kids in the corral with us all year long. Any funny business and those girls get a ride to town. Our calves are not creep fed.

We feel very blessed to be in the Red Angus business and are passionate about the quality of our herd. We would like to thank family, friends, and our loyal customers who help make our business successful and allow us to keep doing with we love! Thank you for taking the time to look through our catalog. We would love to answer any questions you might have! Visitors are welcome on the ranch anytime!

Brandon & Dixie Rusch | Sherill & Kim Seeger



For the LOVE of RED cattle

404 RUSCH ENERGIZE 404

01-31-2024	A — 100%	Ratio	Data									
SEEG / 404	# 5001737	Act. BW	87 68									
		Act. WW	103 696									
		Adj. YW	82 1053									
BIEBER CL ATOMIC C218 BIEBER CL ENERGIZE F121 #3958815 BIEBER CLADELLE 575D		EPD Top% Data										
BECKTON EPIC R397 K RUSCH HEIDI 212 #4651733 3SCC HEIDI Y25		MARB	0.48 37%									
MPPA: 101 Dam Age: 2 yr		YG	0.14 87%									
ProS	HB	GM	CED	BW	WW	YW	MILK	ME	HPG	CEM	STAY	
EPD	138	74	65	14	-3.8	67	112	29	4	16	9	16
Top	9%	13%	23%	31%	17%	42%	33%	23%	54%	5%	14%	37%



411 SEEGER CONSTITUTION 411

02-04-2024	A — 100%	Ratio	Data									
SEEG / 411	# 5001529	Act. BW	108 93									
		Act. WW	89 655									
		Adj. YW	93 1193									
HXC PATRIOT 7796E HXC CONSTITUTION 1105J #4525029 HXC 604D		EPD Top% Data										
5L THE REAL DEAL 1687-143B JACOBSON SADIE 8039 #3954389 TRCC SADIE 23 Z		MARB	0.75 7%									
MPPA: 96 Dam Age: 6 yr		YG	-0.00 20%									
ProS	HB	GM	CED	BW	WW	YW	MILK	ME	HPG	CEM	STAY	
EPD	120	44	77	12	-2.1	57	94	30	1	8	7	15
Top	26%	68%	9%	61%	43%	81%	72%	16%	36%	97%	59%	48%

428 RUSCH GENESIS 428

02-08-2024	A — 100%	Ratio	Data									
SEEG / 428	# 5001717	Act. BW	100 82									
		Act. WW	99 677									
		Adj. YW	107 1365									
C-BAR EVOLUTION 107Y C-BAR-RJ GENESIS A31 #1628423 C-BAR ABIGRACE W91		EPD Top% Data										
COLLIER FINISHED PRODUCT NSFR VICTORIA J25 #4495379 NSFR VICTORIA C35		MARB	0.37 67%									
MPPA: 101 Dam Age: 3 yr		YG	0.02 28%									
ProS	HB	GM	CED	BW	WW	YW	MILK	ME	HPG	CEM	STAY	
EPD	79	28	51	11	-1.3	68	109	22	5	9	6	12
Top	84%	90%	50%	78%	59%	39%	39%	86%	59%	96%	65%	78%



432 RUSCH FLASHDRIVE 432														
02-08-2024		A — 100%		Ratio		Data								
SEEG / 432		# 5001485		Act. BW	103	89								
				Act. WW	94	685								
				Adj. YW	93	1191								
BIEBER HARD DRIVE E640														
BIEBER FLASHDRIVE G266 #4140008														
BIEBER FLOWER 312E														
5L TRADESMAN 1715-6237														
JACOBSON REBA 6234 #3568129														
JACOBSON REBA 8206														
MPPA: 97 Dam Age: 8 yr														
ProS	HB	GM	CED	BW	WW	YW	MILK	ME	HPG	CEM	STAY			
EPD	140	52	87	12	-0.5	69	110	26	10	13	8	15		
Top%	9%	50%	4%	67%	75%	35%	36%	51%	83%	31%	32%	48%		



440 RUSCH GENESIS 440														
02-09-2024		A — 100%		Ratio		Data								
SEEG / 440		# 5001557		Act. BW	113	97								
				Act. WW	89	649								
				Adj. YW	97	1236								
C-BAR EVOLUTION 107Y														
C-BAR-RJ GENESIS A31 #1628423														
C-BAR ABIGRACE W91														
GMRA TRILOGY 0226														
RUSCH MS EQUAL 807 #3998972														
RUSCH MS EQUAL 613														
MPPA: 94 Dam Age: 6 yr														
ProS	HB	GM	CED	BW	WW	YW	MILK	ME	HPG	CEM	STAY			
EPD	93	33	60	8	0.6	66	105	22	9	11	4	14		
Top	67%	85%	31%	97%	89%	47%	48%	85%	79%	53%	95%	53%		

441 SEEGER ENERGIZE 441														
02-09-2024		A — 100%		Ratio		Data								
SEEG / 441		# 5001427		Act. BW	107	91								
				Act. WW	105	755								
				Adj. YW	97	1243								
BIEBER CL ATOMIC C218														
BIEBER CL ENERGIZE F121 #3958815														
BIEBER CL ADELLE 575D														
L83 ENTOURAGE 112														
MACK QUEEN 1118B #1682357														
JACOBSON QUEEN 1118														
MPPA: 107 Dam Age: 10 yr														
ProS	HB	GM	CED	BW	WW	YW	MILK	ME	HPG	CEM	STAY			
EPD	105	52	53	9	0.1	71	114	32	9	14	4	16		
Top	48%	50%	46%	92%	84%	30%	29%	7%	79%	13%	95%	29%		



443 SEEGER FLASHDRIVE 443														
02-10-2024			A — 100%			Ratio			Data					
SEEG / 443			# 5001435			Act. BW	87	74	Act. WW	95	680	Adj. YW	89	1131
BIEBER HARD DRIVE E640 BIEBER FLASHDRIVE G266 #4140008 BIEBER FLOWER 312E														
FORSTER EPIC Y071 SEEGER MS APRIL 410 #1708586 SEEGER APRIL 22														
MPPA: 100 Dam Age: 10 yr														
ProS	HB	GM	CED	BW	WW	YW	MILK	ME	HPG	CEM	STAY			
EPD	144	71	73	15	-2.2	69	111	29	16	12	11	18		
Top	6%	16%	13%	25%	42%	34%	36%	22%	97%	45%	2%	11%		



454 SEEGER FLASHDRIVE 454														
02-11-2024			A — 100%			Ratio			Data					
SEEG / 454			# 5001581			Act. BW	102	87	Act. WW	101	725	Adj. YW	100	1275
BIEBER HARD DRIVE E640 BIEBER FLASHDRIVE G266 #4140008 BIEBER FLOWER 312E														
PELTON WIDELOAD 78B SEEGER BELLE 915 #4129790 SEEGER BELLE 529														
MPPA: 101 Dam Age: 5 yr														
ProS	HB	GM	CED	BW	WW	YW	MILK	ME	HPG	CEM	STAY			
EPD	141	55	86	12	-1.6	72	118	29	11	12	7	16		
Top	8%	44%	4%	65%	54%	24%	22%	21%	86%	47%	48%	30%		

458 RUSCH EPIC 458														
02-11-2024			A — 100%			Ratio			Data					
SEEG / 458			# 5001547			Act. BW	103	89	Act. WW	100	725	Adj. YW	100	1280
BECKTON EPIC K F075 BECKTON EPIC R397 K #1042135 BECKTON KIT F468 JL														
GMRA TRILOGY 0226 RUSCH AUBURN 812 #3998878 DKK AUBURN 323														
MPPA: 98 Dam Age: 6 yr														
ProS	HB	GM	CED	BW	WW	YW	MILK	ME	HPG	CEM	STAY			
EPD	129	65	64	9	-0.3	72	118	25	5	15	6	16		
Top	17%	26%	24%	92%	78%	26%	21%	54%	58%	7%	72%	34%		



459 RUSCH BOURNE 459													
02-11-2024		A — 100%		Ratio		Data							
SEEG / 459		# 5001517		Act. BW	102	88							
				Act. WW	92	667							
				Adj. YW	101	1295							
5L ADVANTAGE 3267-221Y 5L BOURNE 117-48A #1627789 5L ROXIE 854-117													
5L FIRECRACKER 560-117A RUSCH CEDAR 711 #3802602 JACOBSON CEDAR 5103													
MPPA: 101 Dam Age: 7 yr													
ProS	HB	GM	CED	BW	WW	YW	MILK	ME	HPG	CEM	STAY		
EPD	109	52	57	12	-1.7	69	106	26	-1	17	5	13	
Top	42%	52%	35%	65%	52%	37%	47%	53%	26%	1%	90%	76%	



460 RUSCH FLASHDRIVE 460													
02-11-2024		A — 100%		Ratio		Data							
SEEG / 460		# 5001551		Act. BW	81	70							
				Act. WW	91	663							
				Adj. YW	101	1289							
BIEBER HARD DRIVE E640 BIEBER FLASHDRIVE G266 #4140008 BIEBER FLOWER 312E													
JACOBSON FEEDOM 6027 RUSCH HEIDI 850 #3998958 RUSCH HEIDI 616													
MPPA: 97 Dam Age: 6 yr													
ProS	HB	GM	CED	BW	WW	YW	MILK	ME	HPG	CEM	STAY		
EPD	134	58	76	16	-3.4	69	115	28	16	14	10	16	
Top	13%	39%	10%	16%	22%	34%	27%	33%	97%	19%	5%	37%	

462 RUSCH ORIGINAL 462													
02-11-2024		A — 100%		Ratio		Data							
SEEG / 462		# 5001679		Act. BW	102	84							
				Act. WW	107	735							
				Adj. YW	99	1270							
WEDEL RANCHMASTER 9052G WEDEL ORIGINAL 1197 #4471915 WFL AMP F8108													
LOOSLI RELEVANT 819 RUSCH EXTRA 1129 #4494923 KKC EXTRA 12D													
MPPA: 105 Dam Age: 3 yr													
ProS	HB	GM	CED	BW	WW	YW	MILK	ME	HPG	CEM	STAY		
EPD	116	53	63	10	-0.2	81	137	34	11	11	6	16	
Top	32%	49%	25%	86%	80%	7%	4%	2%	87%	62%	72%	30%	



464 SEEGER MAJOR LEAGUE 464													
02-11-2024		A — 100%		Ratio		Data							
SEEG / 464		# 5001605		Act. BW	97	82							
				Act. WW	105	739							
				Adj. YW	98	1253							
BFCK CHEROKEE CNYN 4912 LCC MAJOR LEAGUE A502M #832407 KRN REBA'S ROBIN													
KF RITO 3717 ARMES TAMY 5159-1 #4317105 JACOBSON TAMY 5159													
MPPA: 103 Dam Age: 4 yr													
ProS	HB	GM	CED	BW	WW	YW	MILK	ME	HPG	CEM	STAY		
EPD	82	32	50	12	-1.7	70	107	27	6	13	5	13	
Top	81%	85%	54%	63%	52%	31%	43%	37%	65%	31%	90%	74%	

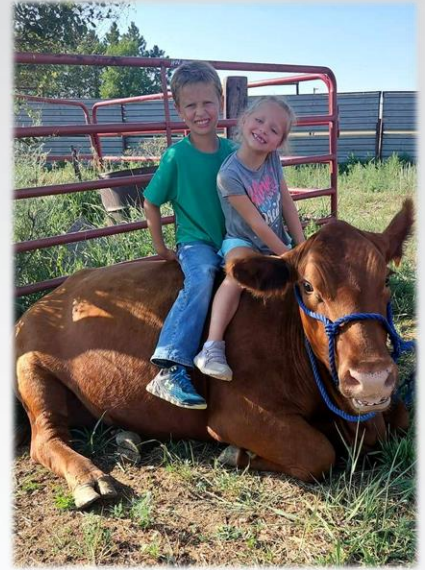


465 RUSCH ENERGIZE 465													
02-12-2024		A — 100%		Ratio		Data							
SEEG / 465		# 5001445		Act. BW	91	78							
				Act. WW	100	718							
				Adj. YW	97	1238							
BIEBER CL ATOMIC C218 BIEBER CL ENERGIZE F121 #3958815 BIEBER CL ADELLE 575D													
CBR CAMKIC 9601-283 SEEGER MISS REDDIE 530 #3479663 OKCC TAG-A-LONG T192													
MPPA: 102 Dam Age: 9 yr													
ProS	HB	GM	CED	BW	WW	YW	MILK	ME	HPG	CEM	STAY		
EPD	128	76	52	15	-3.2	63	104	32	7	15	8	17	
Top	18%	11%	48%	21%	25%	60%	50%	6%	67%	6%	27%	16%	

475 RUSCH CONSTITUTION 475													
02-13-2024		A — 100%		Ratio		Data							
SEEG / 475		# 5001549		Act. BW	100	86							
				Act. WW	98	706							
				Adj. YW	106	1350							
HXC PATRIOT 7796E HXC CONSTITUTION 1105J #4525029 HXC 604D													
ANDRAS FUSION R236 RUSCH COLLEEN 817 #3998948 SEEGER COLLEEN 646													
MPPA: 101 Dam Age: 6 yr													
ProS	HB	GM	CED	BW	WW	YW	MILK	ME	HPG	CEM	STAY		
EPD	133	64	70	13	-2.0	63	103	31	-1	11	8	16	
Top	13%	28%	16%	43%	46%	61%	54%	10%	26%	70%	35%	36%	



478 RUSCH RIGHT KIND 478												
02-14-2024			A — 100%			Ratio			Data			
SEEG / 478			# 5001545			Act. BW			89			
						Act. WW			650			
						Adj. YW			1183			
BUF CRK LANCER R017 BUF CRK THE RIGHT KIND U199 #1260155 BUF CRK SHOSHONE R353												
						EPD Top%			Data			
						MARB			0.52 30%			
						YG			0.07 56%			
						CW			9 91%			
						REA			-0.24 98%			
						FAT			-0.00 9%			
						ADG			0.23 61%			
						DMI			0.38 14%			
ANDRAS FUSION R236 SEEGER CRIMSON 815 #3998874 SEEGER CRIMSON 206												
MPPA: 100 Dam Age: 6 yr												
ProS	HB	GM	CED	BW	WW	YW	MILK	ME	HPG	CEM	STAY	
EPD	103	54	50	13	-1.6	59	96	24	1	9	7	16
Top%	51%	47%	54%	54%	54%	75%	70%	66%	36%	95%	50%	30%



481 RUSCH MAJOR LEAGUE 481												
02-15-2024			A — 100%			Ratio			Data			
SEEG / 481			# 5001477			Act. BW			85			
						Act. WW			708			
						Adj. YW			1255			
BFCK CHEROKEE CNYN 4912 LCC MAJOR LEAGUE A502M #832407 KRN REBA'S ROBIN												
						EPD Top%			Data			
						MARB			0.32 77%			
						YG			0.02 26%			
						CW			20 64%			
						REA			0.16 46%			
						FAT			0.01 32%			
						ADG			0.20 81%			
						DMI			0.75 55%			
FORSTER ANGUS A026 SEEGER TRENDY 630 #3555751 SEEGER TRENDY 402												
MPPA: 106 Dam Age: 8 yr												
ProS	HB	GM	CED	BW	WW	YW	MILK	ME	HPG	CEM	STAY	
EPD	90	57	33	11	-1.6	63	95	30	4	11	5	17
Top	70%	41%	85%	73%	54%	59%	72%	14%	49%	52%	82%	24%

488 RUSCH ENERGIZE 488												
02-17-2024			A — 100%			Ratio			Data			
SEEG / 488			# 5001713			Act. BW			79			
						Act. WW			630			
						Adj. YW			1259			
BIEBER CL ATOMIC C218 BIEBER CL ENERGIZE F121 #3958815 BIEBER CL ADELLE 575D												
						EPD Top%			Data			
						MARB			0.46 41%			
						YG			0.10 69%			
						CW			23 56%			
						REA			0.07 65%			
						FAT			0.02 64%			
						ADG			0.30 16%			
						DMI			0.37 14%			
HXC DECLARATION 5504C RUSCH MS TREND 184 ET #4495123 STEVENS MS TREND 0703												
MPPA: 104 Dam Age: 3 yr												
ProS	HB	GM	CED	BW	WW	YW	MILK	ME	HPG	CEM	STAY	
EPD	111	45	66	14	-2.3	67	115	28	13	14	8	14
Top	39%	65%	21%	40%	41%	42%	27%	27%	93%	16%	27%	64%



489 RUSCH STRONGHOLD 489												
02-17-2024			A — 100%			Ratio			Data			
SEEG / 489			# 5001555			Act. BW	100	86	Act. WW	104	737	
LJT CITADEL 812						Adj. YW	103	1313				
TROTTERS STRONGHOLD 156 #1496650						EPD Top%			Data			
LJT PEARL 579						MARB	0.47	39%	YG	0.09	64%	
LSF CONQUEROR 0026X						CW	33	18%	REA	0.32	20%	
RUSCH CRIMSON 810 #3998970						FAT	0.04	83%	ADG	0.30	13%	
SEEGER CRIMSON 610						DMI	0.96	77%	3.91			
MPPA: 104 Dam Age: 6 yr												
ProS	HB	GM	CED	BW	WW	YW	MILK	ME	HPG	CEM	STAY	
EPD	97	34	63	10	-0.1	75	124	22	10	10	8	
Top	60%	83%	25%	82%	81%	16%	13%	84%	82%	75%	40%	



491 RUSCH NEW DIRECTION 491												
02-17-2024			A — 100%			Ratio			Data			
SEEG / 491			# 5001495			Act. BW	89	77	Act. WW	92	652	
ANDRAS IN FOCUS B152						Adj. YW	95	1211				
ANDRAS NEW DIRECTION R240 #1506922						EPD Top%			Data			
ANDRAS KURUBA B111						MARB	0.42	49%	YG	0.18	95%	
WCR XTRA 3285A						CW	31	23%	REA	-0.10	91%	
KKC EXTRA 12D #3740395						FAT	0.02	60%	ADG	0.26	37%	
SHANNA A112						DMI	0.83	64%	3.76			
MPPA: 96 Dam Age: 8 yr												
ProS	HB	GM	CED	BW	WW	YW	MILK	ME	HPG	CEM	STAY	
EPD	129	71	58	14	-2.2	59	100	22	3	15	7	
Top	16%	16%	33%	39%	42%	76%	60%	87%	44%	7%	48%	

494 RUSCH RIGHT KIND 494												
02-18-2024			A — 100%			Ratio			Data			
SEEG / 494			# 5001589			Act. BW	108	92	Act. WW	97	676	
BUF CRK LANCER R017						Adj. YW	111	1415				
BUF CRK THE RIGHT KIND U199 #1260155						EPD Top%			Data			
BUF CRK SHOSHONE R353						MARB	0.42	49%	YG	0.07	53%	
CRUMP MISSION STATEMENT 6187						CW	22	57%	REA	-0.02	82%	
BB MS SOAPY 9323 #4169350						FAT	0.00	23%	ADG	0.29	18%	
BB MS SOAPY 6001						DMI	0.67	44%	4.83			
MPPA: 103 Dam Age: 5 yr												
ProS	HB	GM	CED	BW	WW	YW	MILK	ME	HPG	CEM	STAY	
EPD	89	34	56	10	0.0	70	117	24	5	13	6	
Top	72%	84%	39%	85%	82%	31%	23%	71%	58%	26%	65%	



4104 RUSCH FLASHDRIVE 4104													
02-20-2024		A — 100%		Ratio		Data							
SEEG / 4104		# 4955224		Act. BW	93	87							
				Act. WW	99	685							
				Adj. YW	89	1084							
BIEBER HARD DRIVE E640 BIEBER FLASHDRIVE G266 #4140008 BIEBER FLOWER 312E													
ANDRAS NEW DIRECTION R240 RUSCH HEIDI 616 #3555724 JACOBSON HIEDI 1159													
MPPA: 99 Dam Age: 8 yr													
ProS	HB	GM	CED	BW	WW	YW	MILK	ME	HPG	CEM	STAY		
EPD	114	51	62	13	0.1	81	135	27	16	15	8	14	
Top%	35%	52%	26%	47%	84%	7%	5%	35%	97%	11%	24%	55%	



4106 RUSCH EPIC 4106													
02-21-2024		A — 100%		Ratio		Data							
SEEG / 4106		# 5001467		Act. BW	123	106							
				Act. WW	105	735							
				Adj. YW	104	1328							
BECKTON EPIC K F075 BECKTON EPIC R397 K #1042135 BECKTON KIT F468 JL													
C-BAR ANTICIPATION 101W SEEGER DAISY 611 #3555733 SEEGER DAISY 213													
MPPA: 98 Dam Age: 8 yr													
ProS	HB	GM	CED	BW	WW	YW	MILK	ME	HPG	CEM	STAY		
EPD	118	63	55	8	2.0	81	126	24	5	14	4	16	
Top%	29%	28%	41%	96%	97%	7%	11%	66%	60%	11%	93%	25%	

4109 RUSCH FARM TANK 4109													
02-23-2024		A — 100%		Ratio		Data							
SEEG / 4109		# 5001757		Act. BW	93	73							
				Act. WW	104	627							
				Adj. YW	97	1235							
BIEBER CL STOCKMARKET E119 GM FARM TANK 203 #4657171 GM DESIGNER POWER 003													
RUSCH CONQUEROR 923 RUSCH IMPRESS 2117 #4652051 RUSCH IMPRESS 0109													
MPPA: 102 Dam Age: 2 yr													
ProS	HB	GM	CED	BW	WW	YW	MILK	ME	HPG	CEM	STAY		
EPD	88	41	47	16	-4.1	76	115	28	13	10	10	14	
Top%	74%	72%	62%	10%	13%	14%	27%	28%	93%	80%	6%	66%	



4111 SEEGER FARM TANK 4111													
02-23-2024		A — 100%		Ratio		Data							
SEEG / 4111		# 5001761		Act. BW	97	77							
				Act. WW	101	627							
				Adj. YW	105	1345							
BIEBER CL STOCKMARKET E119 GM FARM TANK 203 #4657171 GM DESIGNER POWER 003													
LCC MAJOR LEAGUE A502M RUSCH MS TREND 217 ET #4652065 STEVENS MS TREND 0703													
MPPA: 100 Dam Age: 2 yr													
ProS	HB	GM	CED	BW	WW	YW	MILK	ME	HPG	CEM	STAY		
EPD	120	50	70	15	-2.3	75	118	29	11	10	9	15	
Top%	27%	56%	16%	25%	41%	18%	22%	19%	87%	84%	21%	41%	



4114 RUSCH KRIKKEE 4114													
02-24-2024		A — 100%		Ratio		Data							
SEEG / 4114		# 4955222		Act. BW	112	103							
				Act. WW	109	735							
				Adj. YW	108	1315							
C-T REPUTATION 0094 OVER KRIKKEE 2940K #4619431 OVER 2940Z													
JACOBSON BLAZIN ON 0057 JACOBSON MORGAN 4025 #1699264 JACOBSON MORGAN 2120													
MPPA: 104 Dam Age: 10 yr													
ProS	HB	GM	CED	BW	WW	YW	MILK	ME	HPG	CEM	STAY		
EPD	80	48	33	9	-0.3	70	110	33	4	9	5	16	
Top%	83%	60%	86%	89%	78%	30%	37%	5%	51%	94%	82%	37%	

4115 SEEGER FRANCHISE 4115													
02-26-2024		A — 100%		Ratio		Data							
SEEG / 4115		# 4955220		Act. BW	107	99							
				Act. WW	106	717							
				Adj. YW	111	1360							
9 MILE FRANCHISE 6305 PIE FRANCHISE 969 #4210590 PIE RUBY LADY 710													
JACOBSON BLAZIN ON 0057 JACOBSON GRETTA 5184 #3498701 JACOBSON GRETTA 9058													
MPPA: 103 Dam Age: 9 yr													
ProS	HB	GM	CED	BW	WW	YW	MILK	ME	HPG	CEM	STAY		
EPD	114	59	55	8	1.4	79	128	31	4	12	5	16	
Top%	36%	38%	40%	96%	95%	9%	9%	9%	53%	35%	83%	37%	



4119 SEEGER RELEVANT 4119													
02-27-2024		A — 100%		Ratio		Data							
SEEG / 4119		# 5001701		Act. BW	85	70							
				Act. WW	99	638							
				Adj. YW	108	1376							
5L THE REAL DEAL 1687-143B LOOSLI RELEVANT 819 #3907331 SRR DORY-JIBA 0155-5036													
ANDRAS FUSION R236 RUSCH MS EQUAL 103 #4495071 RUSCH MS EQUAL 903													
MPPA: 100 Dam Age: 3 yr													
ProS	HB	GM	CED	BW	WW	YW	MILK	ME	HPG	CEM	STAY		
EPD	95	29	66	14	-2.9	69	118	31	12	8	9	13	
Top%	64%	89%	21%	33%	30%	34%	21%	9%	91%	98%	15%	75%	



4127 RUSCH KRIKKEE 4127													
02-29-2024		A — 100%		Ratio		Data							
SEEG / 4127		# 5001449		Act. BW	110	95							
				Act. WW	109	738							
				Adj. YW	109	1397							
C-T REPUTATION 0094 OVER KRIKKEE 2940K #4619431 OVER 2940Z													
PTJ REDBULL 206 JJJ FIRESTEEL 525 #3511168 SEEGER LITTLE FIRE 110													
MPPA: 99 Dam Age: 9 yr													
ProS	HB	GM	CED	BW	WW	YW	MILK	ME	HPG	CEM	STAY		
EPD	89	59	31	12	-0.9	79	119	29	6	7	5	18	
Top%	72%	38%	88%	63%	66%	9%	21%	19%	61%	99%	83%	10%	

4135 RUSCH KRIKKEE 4135													
03-02-2024		A — 100%		Ratio		Data							
SEEG / 4135		# 5001669		Act. BW	94	77							
				Act. WW	103	635							
				Adj. YW	106	1354							
C-T REPUTATION 0094 OVER KRIKKEE 2940K #4619431 OVER 2940Z													
LCC MAJOR LEAGUE A502M SEEGER GRETTA 141 #4494861 JACOBSON GRETTA 5184													
MPPA: 103 Dam Age: 3 yr													
ProS	HB	GM	CED	BW	WW	YW	MILK	ME	HPG	CEM	STAY		
EPD	88	47	41	12	-1.2	80	119	31	5	9	5	16	
Top%	74%	61%	73%	69%	62%	8%	20%	10%	60%	93%	86%	36%	



4139 RUSCH RELEVANT 0101-4139												
03-02-2024			A — 100%			Ratio			Data			
SEEG / 4139			# 5001607			Act. BW	114	96				
						Act. WW	101	658				
						Adj. YW	99	1267				
LOOSLI RELEVANT 819 RUSCH RELEVANT 0101 #4317691 RUSCH MS EQUAL 613												
RUSCH MR PACKER 860 RUSCH COLLENE 0142 #4317559 KAUTZ LADY COLLENE 106												
MPPA: 98 Dam Age: 4 yr												
ProS	HB	GM	CED	BW	WW	YW	MILK	ME	HPG	CEM	STAY	
EPD	102	51	51	8	0.9	76	123	31	10	13	4	16
Top%	54%	54%	51%	94%	91%	14%	15%	11%	85%	33%	94%	27%



4148 RUSCH KRIKKEE 4148												
03-04-2024			A — 100%			Ratio			Data			
SEEG / 4148			# 4955236			Act. BW	75	69				
						Act. WW	102	660				
						Adj. YW	101	1227				
C-T REPUTATION 0094 OVER KRIKKEE 2940K #4619431 OVER 2940Z												
BADLANDS NET WORTH 23U 3SCC HEIDI Y25 #1441074 SEEGER HEIDI 9905												
MPPA: 99 Dam Age: 13 yr												
ProS	HB	GM	CED	BW	WW	YW	MILK	ME	HPG	CEM	STAY	
EPD	115	73	42	14	-3.0	71	108	28	4	10	9	18
Top%	34%	14%	70%	31%	28%	27%	42%	29%	53%	86%	15%	13%



4155 RUSCH CODY 4155												
03-06-2024			A — 100%			Ratio			Data			
SEEG / 4155			# 5001721			Act. BW	103	85				
						Act. WW	106	662				
						Adj. YW	108	1378				
FORSTER CODY A412 FORSTER CODY F091 #4081028 FORSTER SAGE Z148												
2TRCC MAVRICK 176G TRCC RUTH 112 J #4501823 TRCC RUTH 57G												
MPPA: 103 Dam Age: 3 yr												
ProS	HB	GM	CED	BW	WW	YW	MILK	ME	HPG	CEM	STAY	
EPD	67	17	50	10	0.6	71	116	26	5	10	4	11
Top%	93%	97%	53%	85%	89%	29%	25%	47%	59%	76%	92%	87%

4167 SEEGER BRANDO 4167												
03-14-2024			A — 100%			Ratio			Data			
SEEG / 4167			# 5001567			Act. BW	115	98	Act. WW	109	695	
RED SIX MILE BRANDO 666C												
WEBR BRANDO 289 #4665877												
WEBR DALLAS 48G												
STRA EPITOME 7114												
GM HEIDI 9007 #4122624												
GM HEIDI 536												
MPPA: 102 Dam Age: 5 yr												
ProS	HB	GM	CED	BW	WW	YW	MILK	ME	HPG	CEM	STAY	
EPD	91	39	52	9	1.3	75	122	31	15	10	4	17
Top%	69%	75%	49%	91%	94%	16%	15%	11%	96%	79%	94%	23%



4173 RUSCH ORIGINAL 4173												
03-21-2024			A — 100%			Ratio			Data			
SEEG / 4173			# 5001451			Act. BW	109	93	Act. WW	108	668	
WEDEL RANCHMASTER 9052G												
WEDEL ORIGINAL 1197 #4471915												
WFL AMP F8108												
ANDRAS NEW DIRECTION R240												
JJJ LITTLE DIRECTION 513 #3511170												
JJJ LITTLE RED 314												
MPPA: 105 Dam Age: 9 yr												
ProS	HB	GM	CED	BW	WW	YW	MILK	ME	HPG	CEM	STAY	
EPD	101	44	57	10	-0.6	75	125	31	8	13	4	15
Top%	55%	67%	37%	84%	74%	17%	12%	12%	77%	25%	95%	43%

4174 RUSCH KRIKKEE 4174												
03-21-2024			A — 100%			Ratio			Data			
SEEG / 4174			# 5001639			Act. BW	106	89	Act. WW	112	680	
C-T REPUTATION 0094												
OVER KRIKKEE 2940K #4619431												
OVER 2940Z												
3SCC ESCAPE E14												
LRL LAKOTA H307 #4331307												
LRL LAKOTA D151												
MPPA: 104 Dam Age: 4 yr												
ProS	HB	GM	CED	BW	WW	YW	MILK	ME	HPG	CEM	STAY	
EPD	109	54	55	9	-0.1	84	134	32	7	8	6	17
Top%	42%	47%	40%	89%	81%	3%	6%	6%	72%	98%	79%	21%



New Herd Sire



403 RUSCH BOLT 403			
01-29-2024	A — 100% AR%	Ratio	Data
SEEG / 403	# 4943594	Act. BW	72
		Act. WW	720
		Adj. YW	1399
BIEBER CL ATOMIC C218			
BIEBER CL ENERGIZE F121 #3958815			
BIEBER CL ADELLE 575D			
NCRA ROLLING THUNDER 2034			
DKK PEACE 2072 #4598881			
DKK PEACE 532			
MPPA: Dam Age: 2 yr			
	ProS	HB	GM
EPD	125	66	59
Top%	21%	24%	31%
	CED	BW	WW
EPD	13	-2.8	67
Top%	54%	31%	44%
	YW	MILK	ME
EPD	108	30	4
Top%	40%	14%	52%
	HPG	CEM	STAY
EPD	17	8	14
Top%	2%	29%	55%
	FAT	ADG	DMI
EPD	0.18	0.26	0.27
Top%	43%	37%	8%
	REAR		
EPD	19		
Top%	69%		
	REAR		
EPD	0.06		
Top%	98%		



Semen for Sale

Semen is priced at \$25 per unit with a 10 unit minimum. Discounted price with purchase of more than 50 units. After purchase, we will release the semen from Hawkeye Breeder Services.

Contact Hawkeye at (515) 993-4711 to arrange shipping. Buyer is responsible for shipping costs.



PIE STOCKMAN 4051
BIEBER CL STOCKMARKET E119
BIEBER CL ADELLE 475C

DOB: 12-20-2021

GM FARM TANK 203

Reg 4657171

CRUMP POWER KIND 7111
GM DESIGNER POWER 003
KCC MS DESIGNER LINE 65E

	ProS	HB	GM	CED	BW	WW	YW	ADG	DMI	Milk	ME	HPG	CEM	STAY	Marb	YG	CW	REA	Fat
EPD	151	57	97	18	-3.3	86	143	0.35	1.48	31	15	12	12	14	0.95	0.11	43	0.38	0.04
%	6	38	4	5	22	5	5	6	95	12	93	40	2	53	3	69	8	15	81



C-T RED ROCK 5033
C-T REPUTATION 0094
C-T LINSEY 8119

DOB: 2-18-2022

OVER KRIKKEE 2940K

Reg 4619431

LONK GRAND CHEROKEE 856
OVER 2940Z
WAHSED OUT 940W

	ProS	HB	GM	CED	BW	WW	YW	ADG	DMI	Milk	ME	HPG	CEM	STAY	Marb	YG	CW	REA	Fat
EPD	83	44	39	11	-0.2	97	146	0.31	1.29	32	8	6	4	16	0.21	-0.07	43	0.57	-0.01
%	68	60	64	76	74	2	4	17	90	9	70	99	85	28	84	8	9	6	11



5L DEFENDER 560-30Z
 5L THE REAL DEAL 1687-143B
 5L FIREFLY 275-1687

DOB: 1-22-2018

LOOSLI RELEVANT 819

Reg 3907331

BASIN FUTURE DIRECTION 7303
 SRR DORY-JIBA 0155-5036
 SRR DORY JIBA 5036-930

	ProS	HB	GM	CED	BW	WW	YW	ADG	DMI	Milk	ME	HPG	CEM	STAY	Marb	YG	CW	REA	Fat
EPD	89	16	73	9	1.4	89	151	0.38	1.77	35	18	8	6	12	0.41	0.05	56	0.58	0.02
%	62	91	16	89	91	4	3	2	99	2	96	93	60	80	51	42	2	6	44



WFL PROFITMAKER E7030
 WEDEL RANCHMASTER 9052G
 WFL PLATINUM E7102

DOB: 2-17-2021

WEDEL ORIGINAL 1197

Reg 4471915

SCHULER AMPLIFY 6206D
 WFL AMP F8108
 WFL BRIDGER 6175

	ProS	HB	GM	CED	BW	WW	YW	ADG	DMI	Milk	ME	HPG	CEM	STAY	Marb	YG	CW	REA	Fat
EPD	104	43	61	11	-2.3	76	133	0.35	1.19	36	12	12	5	15	0.46	0.12	28	0.00	0.01
%	43	63	28	73	39	20	10	6	86	2	85	37	82	44	42	71	31	68	43



LEACHMAN PLEDGE A282Z
 HXC PATRIOT 7796E
 HXC 502R

DOB: 2-8-2021

HXC CONSTITUTION 1105J

Reg 4525029

SPUR FRANCHISE OF GARTON
 HXC 604D
 HXC 428P

	ProS	HB	GM	CED	BW	WW	YW	ADG	DMI	Milk	ME	HPG	CEM	STAY	Marb	YG	CW	REA	Fat
EPD	141	61	80	14	-4.2	58	94	0.23	0.47	35	-6	12	8	14	0.84	-0.08	14	0.58	0.04
%	9	28	11	34	13	79	73	64	25	2	11	43	35	51	5	8	78	6	80

REDS RISING

Escalate Your Prosperity

Red Angus boosts profitability with docile temperaments, environmental resilience, premium carcass quality and exceptional maternal traits. Registrations have surged by 24% over the past decade, underscoring Red Angus' significance across all segments of the beef industry.



Scan the QR code for real rancher stories about the rising power of Red Angus.

RedAngus.org

RE^{ANGUS} ANGUS

RANCH TESTED. RANCHER TRUSTED.



Red Angus Guide to EPDS and Indexes

ProS... Profitability and Sustainability is an all-purpose index that predicts average economic differences in all segments in the beef supply chain. This index is a combination of the breeding objectives modeled in the HerdBuilder and GridMaster selection indexes. In this index, replacement heifers are retained from within the herd and all remaining progeny are fed out to slaughter and sold on a quality-based grid. Traits included in this index include calving ease, growth, HPG, STAY, Mature Weight, Dry Matter Intake and carcass traits. The resulting index is expressed in dollars per head born (Index/High Value).

HB HerdBuilder is a maternal selection index that predicts the economic differences of animals for traits that are important from conception through weaning. Expressed as dollars per head born, HB is calculated based on the scenario that bulls are mated to heifers and cows, replacement heifers are retained and all remaining progeny are marketed at weaning. Traits included in the HB index include Calving Ease Direct, Calving Ease Maternal, Weaning Weight, Milk, Mature Weight, Heifer Pregnancy and Stayability (Index/High Value).

GM..... GridMaster is a selection index that predicts the average economic difference of non-replacement calves through the post-weaning phase of production. GM places selection pressure on growth, feedyard performance and carcass traits. Expressed as dollars per head born, GM is calculated based on the scenario that progeny are fed out to slaughter and marketed on a quality-based carcass grid. Traits included in GM include Average Daily Gain, Carcass Weight, Dry Matter Intake, Marbling, Back Fat and Rib Eye Area (Index/High Value).

CED Calving Ease Direct predicts differences in the percent of calves born unassisted out of 2-year-old dams. (Percent/High Value)

BW Birth Weight predicts differences in actual birth weight of progeny. (Pounds/Low Value)

WW Weaning Weight predicts differences in 205-day weaning weight. (Pounds/High Value)

YW Yearling Weight predicts differences in 365-day yearling weight. (Pounds/High Value)

ADG Average Daily Gain predicts differences in weight gain between 205 and 365 days of age. (Pounds/High Value)

DMI Dry Matter Intake predicts differences in daily feed intake as measured in a feedlot during the post-weaning period. (Pounds/Low Value)

MILK Milk predicts differences in weaning weight attributed to the milking ability of the animal's daughters. (Pounds/High Value)

ME Maintenance Energy predicts the difference in maintenance energy requirements. (Mcal per Month/Low Value)

HPG Heifer Pregnancy predicts differences in the percent of daughters who are able to conceive and calve at 2 years of age following exposure to breeding. (Percent/High Value)

CEM Calving Ease Maternal predicts differences in the percent of daughters who are able to calve unassisted as 2-year-old heifers. (Percent/High Value)

STAY Stayability predicts differences in the ability of an animals' retained daughters to remain productive in the herd – calve every year – through 6 years of age. (Percent/High Value)

MARB Marbling predicts differences in marbling score – amount of intramuscular fat measured at the 13th rib. (Marbling Score Units/High Value)

YG Yield Grade predicts differences in USDA Yield Grade, which is calculated using CW, REA and Fat. (Yield Grade Units/Low Value)

CW Carcass Weight predicts differences in actual hot carcass weight. (Pounds/High Value)

REA Ribeye Area predicts differences in square inches of ribeye area measured at the 13th rib. (Square Inches/High Value)

FAT Fat predicts differences in the depth of backfat measured between the 12th and 13th ribs. (Inches/Low Value)

RE ANGUS
RANCH TESTED. RANCHER TRUSTED.
RedAngus.org





**3325 54th Avenue
New Salem, ND 58563**



**Free Delivery within 300 mile radius
Bulls will be semen tested starting in April**

**Come view the bulls at the Rusch Feed Lot
3105 44th Ave, New Salem, ND**

Brandon 701-226-5479 | Dixie 701-426-9443 | Sherill 701-400-5077